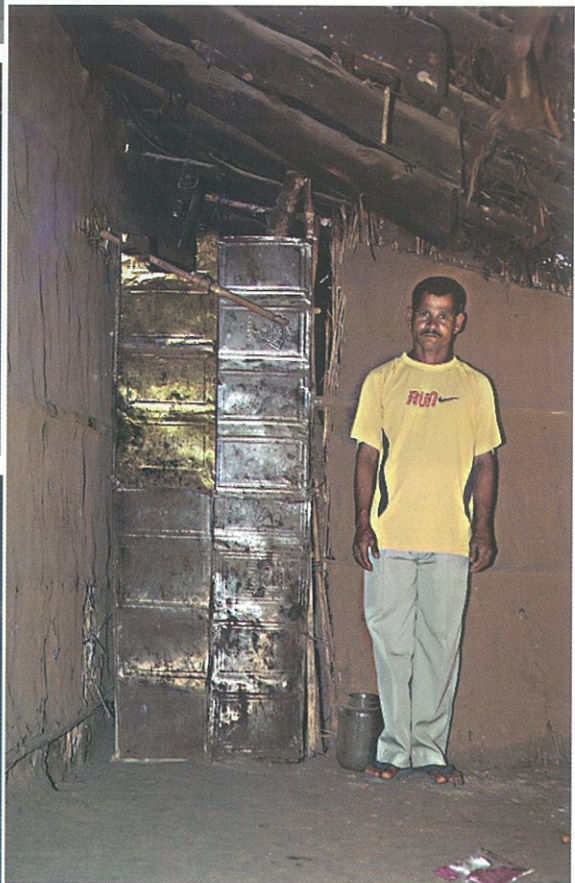
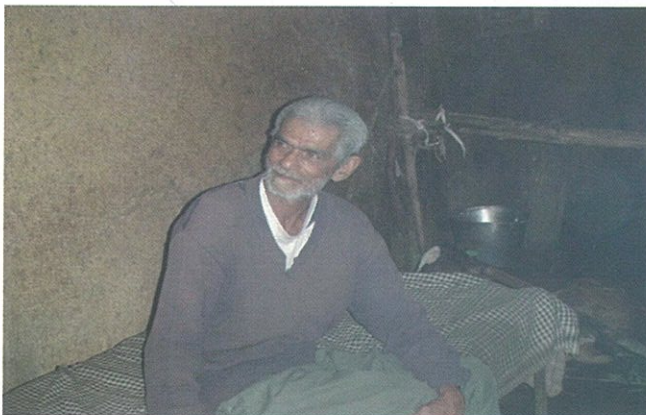


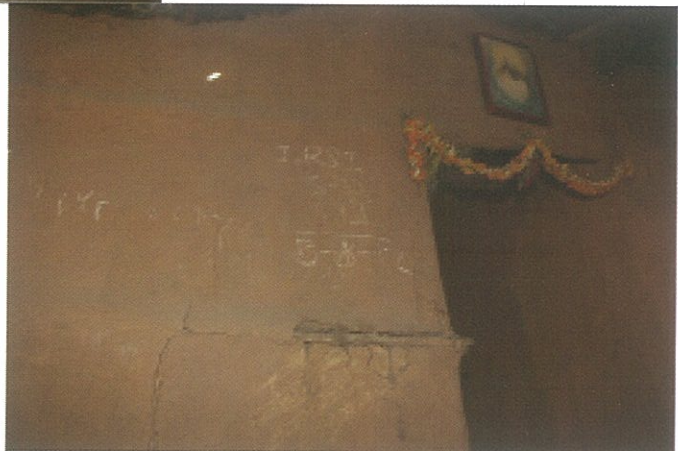
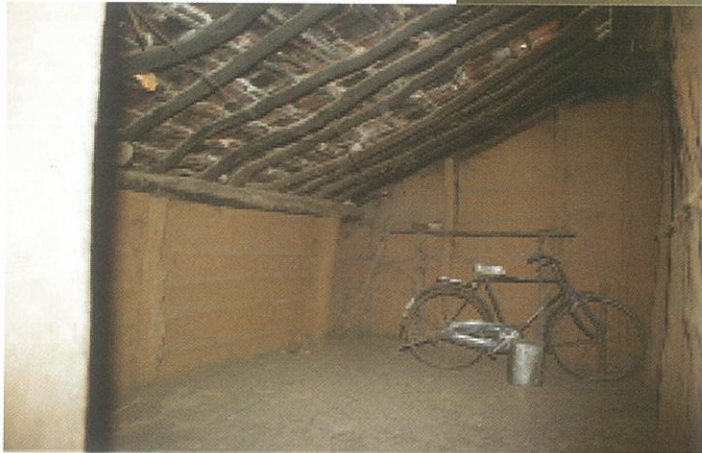
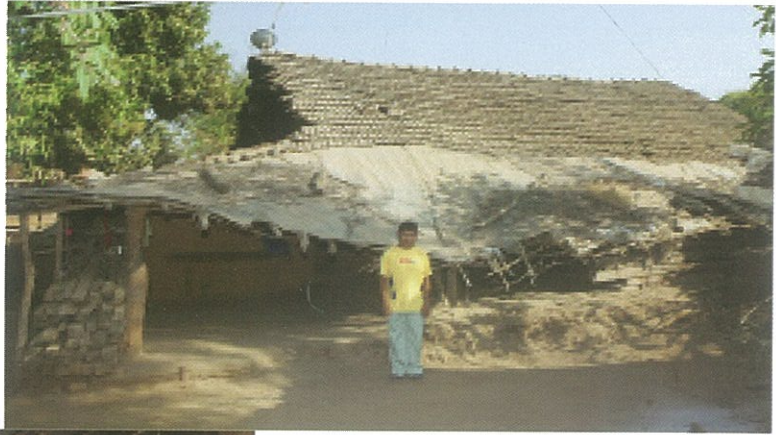
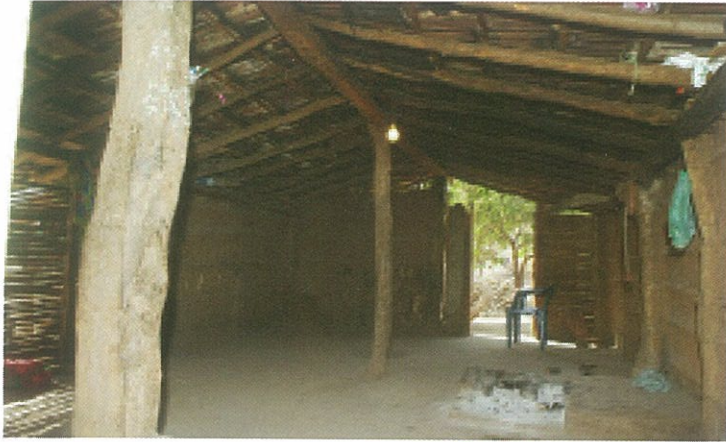
## GLIMPSES OF POVERTY

There is a wide difference between the lifestyles of our community in urban and rural locations. Zoroastrians residing in urban areas cannot perceive the abysmal levels of poverty in which many of our brethren live in the rural areas. Wherever we observe Zoroastrians living in poverty stricken conditions in the rural areas, we make efforts to rehabilitate such families. The road is however long and we have very many miles to go. We present here some pictures of the abysmal conditions in which many of our coreligionists live in the villages of Gujarat.





An Overview of Welfare Activities - 2012





## RELIEF FROM POVERTY

Despite the perceived general economic affluence of the community, it is a fact that appreciable levels of poverty do exist in some segments of our community.

This segment generally encompasses the economically challenged strata of our community. The recipients depend on doles from various Trust's and philanthropists. Parsi poor may not be visible on the streets or even in slums; but certain sections of the community are economically disadvantaged and live on very low subsistence support.



It will be pertinent to mention that in the conclusions and recommendations of a fairly recent (2009) survey conducted by TISS on socio-economic and educational status of the community in India, it has been recorded that amongst beneficiaries surveyed who were dependant on doles, 70% of those surveyed, subsisted on a family income of less than Rs.2,600/= pm.

Compare the above with the report of the Planning Commission of India which considers the minimum sustenance level required for a poor person to be Rs.29/= per day or Rs.882/= per month per person or Rs.3,528/= per month for a family of four. The figures tell their own story.

For a community considered to be affluent there are vast pockets of poverty in both urban, semi urban as well as rural settlements. We find there are many elderly as well as handicapped individuals that require support to survive.

During the course of the year 2012 we raised funds to support 373 elderly / indigent Zoroastrians expending Rs.12,076,766/= (\$232,245; £140,427) in the process.

From time to time we also raise funds to distribute food grains and other essential items to around 120 to 150 poor Zoroastrian families residing in the rural areas of Gujarat.



An Overview of Welfare Activities - 2012



WZOT - Manufacturing Confidence, Changing Lives, Creating a Strong Community